

BA Toppers-2019-20



Taizum S. Harapanahalli
86.64%



Vidya Hegade
86.14%



Shifanaanjum M. Momin
83.64%

BSc Toppers-2019-20



Siddalingesh K.
92.31%



Snehalata M. M.
91.86%



Parvati Vibhuti
88.78%

BCom Toppers-2019-20



Naveen Ayyanagoudar
90.62%



Vibha Sannakki
90.46%



Netravati Kammar
89.35%



08375 232475

08375 236824

principalghc@gmail.com

www.klegcollege.com



**K. L. E. Society's
GUDLEPPA HALLIKERI
ARTS, SCIENCE AND COMMERCE
COLLEGE, HAVERI-581110**

Karnataka-India

(Re-accredited by NAAC at 'A' Grade with CGPA 3.23)

Affiliated to Karnatak University, Dharwad

PROSPECTUS

2020-21

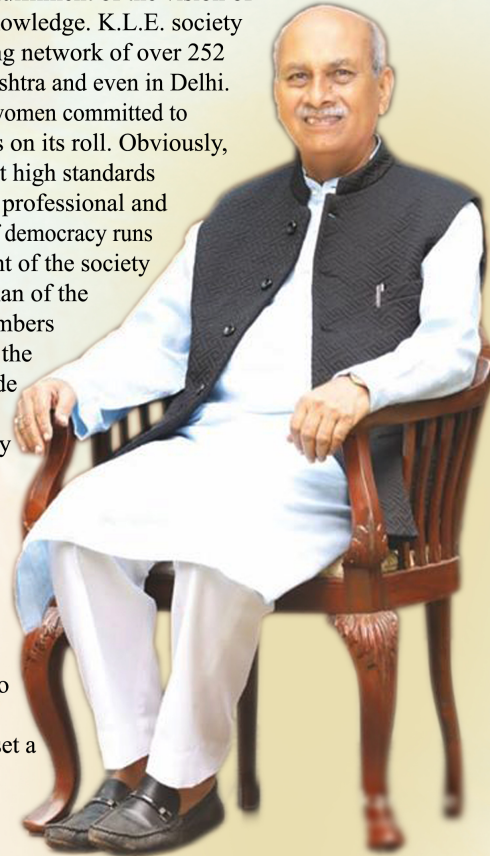
K. L. E. Society's
Gudleppa Hallikeri Arts, Science and Commerce College,
P. B. Road, Haveri-581110

K. L. E. Society, Belagavi

Every great event brings one absolute new thing into the new world'. Such an event was starting of the K. L. E. Society in 1916 by seven dedicated teachers and three generous patrons. Their mission was to provide education to the children of farming community who constitute a significant majority of Karnataka. Though moderate and unadvertised was their act, yet it created a sensation in the educational history of this region. Today the environment is totally different from the one in 1916. Yet the mission of the founders of K.L.E. society is persuade with same zeal even after eight decades in the fulfilment of the vision of providing education in all spheres of human knowledge. K.L.E. society enjoys an unrivalled status in India with a strong network of over 252 institutions spread in Karnataka, part of Maharashtra and even in Delhi. The society has employed over 10,000 men and women committed to academic excellence and over 1,00,000 students on its roll. Obviously, K. L. E. Society stands second to none. It has set high standards over the years from K.G. to P.G. classes and in professional and traditional streams of learning. The true spirit of democracy runs in functioning of K.L.E.Society. The Management of the society is effectively and ably carried out by the chairman of the Board of the Management consisting of 15 members duly elected as per constitutional provisions of the Society. The president and Vice-presidents guide the Chairman while Life Members frame academic guidelines. The financial transparency is maintained through regular audit system.

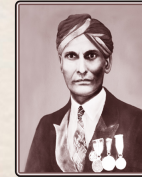
Various institutions speak of the rich heritage of K. L. E. Society. Internationally renowned J.N. Medical college brings the name of the society back in limelight by the quality track record that it has set overseas, infrastructural far-superior, ultra-modern, multi speciality 1,000 bed Hospital and M.R.C.Belgaum adds to it. With right approach and long perspective, Chairman Dr. Prabhakar Kore and his team have set a new tradition that "nothing beats quality."

Dr. PRABHAKAR B. KORE, MP.
Chairman, Board of Management, K.L.E.Society, Belgaum



KARNATAK LINGAYAT EDUCATION SOCIETY BELAGAVI

FOUNDER MEMBERS



Sardar V. G. Naik
Bahaddur Desai, Chachadi



Rao Bahadur R. C. Artal



Rao Bahadur V. A. Anigol

FOUNDER LIFE MEMBERS



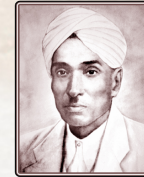
Shri S. S. Basavnal



Shri M. R. Sakhare



Shri B. B. Mamadapur



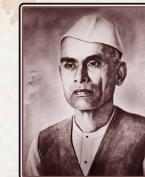
Shri H. F. Kattimani



Shri P. R. Chikkodi



Shri B. S. Hanchinal



Shri V. V. Patil

DONORS



Shri Lingaraj Sardesai



Shri B. V. Bhoomaraddi



Shri Raja Lakamanagouda

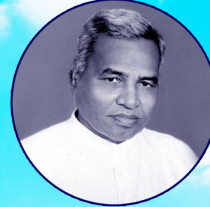
KARNATAK LINGAYAT EDUCATION SOCIETY, BELAGAVI OFFICE BEARERS and MEMBERS OF THE BOARD OF MANAGEMENT

President	:	Shri S. H. Koujalagi, B.Com, LL.B, Ex.M.P., Bailhongal
Vice-Presidents	:	Shri S. S. Belagavi, Hubli Shri M. C. Kolli, B.A., Haveri
Chairman	:	Dr. Prabhakar B. Kore, M.P., Belgaum
Vice-Chairman	:	Shri Ashok G. Bagevadi, B.A., B.Com., Nippani, Tal: Chikkodi
Members	:	Shri Mahantesh M. Kavatagimath, Chikkodi Shri Amit P. Kore, B.E., M.B.A., Belgaum Shri Shrishailappa Channappa Metagud, B.Com, Bailhongal Shri Jayanand M. Munavalli, Gokak Shri Shankranna Ishwarappa Munavalli, Hubli Shri Basavaraj R. Patil, B.A., Kungatoli, Tq: Chikkodi Dr. Vishwanath I. Patil, M.B.B.S., Lingadalli Shri Y. S. Patil, M.A., KAS, (Rtd.), Belgaum Shri Anil Vijayabasappa Patted, B.Com, Belgaum Dr. Virupaxi S. Sadhunavar, M.B.B.S., Bailhongal
Members Nominated	:	Shri Mahadev S. Baligar, MSc, MEd, Belgaum Shri Prakash C. Patil, MSc, PGDBA, Bengaluru Dr. Prakash G. Tewari, M.Tech, Ph.D, Hubballi
Secretary	:	Dr. B. G. Desai, M.pharma Belgaum
Co-ordinators	:	Dr. M. T. Kurani, MSc, PhD, Chikkodi Dr. (Mrs.) Preeti Karan Doddawad, M.D.S., Belgaum

COLLEGE LOCAL GOVERNING BODY

Chairman Nominee	:	Shri S. C. Metagud
Chairman	:	Shri P. D. Shirur
Members	:	Shri B. S. Masur Shri C. B. Hiremath Shri S. J. Herur Shri J. S. Arani Shri S. M. Huralikuppi
Member Secretary	:	Principal

K. L. E. Society's GUDLEPPA HALLIKERI ARTS, SCIENCE AND COMMERCE COLLEGE, HAVERI



Founder of the College
Shri Gudleppa V. Hallikeri



Donor of the College
Shri K. M. Nelavigi

Our college was established in the year 1963. The humble beginning was made with the Arts and Science streams which quenched the thirst of higher education of the long-deprived people of our region. Later, in the year 1977, the commerce stream was added to broaden the scope of the educational horizon. To cater the needs for modern and global-oriented educational courses, we added B.C.A. in the year 2007 and M.Com during the year 2008.

The institute imparts Higher Education in Basic science branches; Physics, Chemistry, Mathematics, Botany, Zoology. Arts stream covers History, Economics, Political Science, Sociology, Geography, English, Kannada and Hindi. Commerce stream covers Financial Accounting, Cost Accounting, Income Tax and Management subjects. Professional touch to the education is given through BCA. Post Graduation in Commerce is the latest inclusion to this long list of bouquet of courses offered.



To become a source of Enlightenment and Empowerment for the seekers of knowledge.



To motivate the students to be socially responsible, productive and useful citizens of the globalized world.



As an educational institute, we aim at developing multidimensional personality in our students with stress towards dedication, patriotism and scientific temper.



Confident individuals become successful citizens.



Learn and succeed.

Our Library:



The college library functions as the heart of the institution with its collection of more than 40,000 books, 64 Journals and periodicals. The library in the campus is a knowledge store house with a good number of books pertaining to all subjects in multiple copies ensuring every student a copy of the desired book. The Library building was constructed under UGC IX plan financial assistance. Our Library is a partner in the conservation of knowledge, ideas and teaching both for students and teachers. It encourages reading for pleasure, self discovery, personal growth and intellectual curiosity.

A special provision is made to help poor, deserving, SC, ST and meritorious students. Students can borrow one book every fortnight for home reading. The Library is kept open from 10-00 am to 6-00 pm on all working days.

- The books will be issued on borrower cards.
- Students can make use of library for reference.
- Students should maintain silence and discipline in the library and observe the instructions given by the Librarian.
- For all Library facilities and provisions, the necessary notifications are put up on the Library Notice Board.
- The Library has internet facility.
- The Library management is fully automated.

Student Welfare Facilities:

- | | |
|--|--------------------------|
| ◆ National Cadet Corps (NCC) | ◆ Cafeteria |
| ◆ National Service Scheme (NSS) | ◆ C. C. TV's |
| ◆ Scouts & Guides | ◆ DG Generators |
| ◆ ECO Club | ◆ Play ground |
| ◆ Youth Red Cross Wing | ◆ NCC Firing Range |
| ◆ Red Ribbon Wing | ◆ Swimming pool |
| ◆ Grievances Redressal Cell | ◆ Badminton Court |
| ◆ Women Empowerment Cell | ◆ Mentor & Mentee System |
| ◆ Placement Cell | ◆ Scholarship |
| ◆ Anti Ragging and Anti Sexual Harassment Cell | ◆ Xerox |
| ◆ Counseling and Career Guidance Cell | ◆ Multi Gym |
| ◆ Health Centre | ◆ Post Office |
| ◆ Safe Drinking Water | ◆ Internet |

Infrastructure:

The total campus area of the college premises is 29 acres and built up area is 4747 sq mtrs . The campus has state of the art infrastructure. There are 21 spacious well furnished lecture halls. 6 well furnished laboratories, Principal chamber, administrative office, ladies staff room, common staff room, independent ladies room. Ladies hostel at an estimated cost of Rs. 80 Lakhs is under construction. New Ladies Hostel and Swimming pool has been constructed.

PROGRAMMES

Programme Information:

- The programmes are affiliated to Karnataka University, Dharwad.
- The degree enables you to combine and in depth study of social science/Science/Commerce/Computer Application
- The degree has a strong emphasis on theory and practice.
- The aim of this degree is to impart knowledge and skills to the students.

Entry Requirement:

- 10+2 pass from the pre-University Board, Bangalore or Examination of any other Board/University recognised as equivalent.
- Students passing the examination of other boards/university shall produce Eligibility Letter from the Registrar, Karnataka University, Dharwad.

Admission Policy:

- Admissions according to the existing rules of admission/ reservation policy of Government of Karnataka. As per the guidelines of admission/reservation policy given by GOK.

Course Work and Assessment:

- Varied method teaching and assessment are used throughout the course which includes Lectures, Seminars, Projects, Group discussion, Tutorials, Home Assignments, Quiz, Monthly Tests, Internal Assessment Tests with the aim of helping students to become independent learners equipped with practical skills and competency.

Other Information:

- Course duration: 3 years (Six Semesters).
- Attendance mode: Full Time.
- A minimum of 75% of attendance is compulsory according to the rules prescribed by the University.

BACHELOR OF ARTS :

BA I & II Year:

- A) Basic English (Compulsory)
 B) Modern Indian Language (MIL) Any one: **Kannada / Hindi**
 C) Optional papers: Students can offer any one of the following combination:

GROUP - I	History	GROUP - II	Geography	GROUP - III	History	GROUP - IV	History	GROUP - V	Kannada
	Geography		Pol. Science		Kannada		Economics		Sociology
	English		Economics		Sociology		English		Pol. Science

BA III Year:

- A) Students can select only one Basic (M.I.L. /M.E.L.) subject:
English, Kannada, Hindi
 B) Optional papers carry 200 marks each.

BACHELOR OF SCIENCE :

BSc
I, II & III Year:

- A) Basic English (Compulsory)
 B) Modern Indian Language (MIL) Any one : Kannada / Hindi
 C) Optional papers: Students can offer any one of the following combination:

G-I Physics, Chemistry, Mathematics

G-II Chemistry, Botany, Zoology

BACHELOR OF COMMERCE :

BCom
I - Semester

English-1
 MIL-1
 Financial Accounting-I
 Business Environment
 Entrepreneurship Development
 Financial Markets and Institutions
 Business Economics-I
 Environmental Science
 Fundamentals of A/cing and Commerce-I

BCom
II - Semester

English-2
 MIL-2
 Financial Accounting-II
 Business Correspondence and Reporting
 Fundamentals of Marketing
 Company Law and Secretarial Practice
 Business Economics-II
 Indian Constitution
 Fundamentals of A/cing and Commerce-II

BCom
III - Semester

English-3
 MIL-3
 Company Accounts-I
 Banking Law and Practice
 Human Resource Management
 Money and Banking
 Business Statistics-I
 Commercial Arithmetic-I

BCom
IV - Semester

English-4
 MIL-4
 Company Accounts-II
 Commercial Law
 Fundamentals of Financial Management
 International Trade and Institutions
 Business Statistics-II
 Commercial Arithmetic-II

BCom
V - Semester

Cost Accounting-I
 Income Tax-Law and Practice-I
 Auditing and Assurance
 Indian Economic Environment
 Computer Applications in Business
 DSE
 DSE

BCom
VI - Semester

Cost Accounting-II
 Income Tax-Law and Practice-II
 Goods and Service Tax (GST)
 Industry and Finance
 E-Commerce
 DSE
 DSE

General Rules:

1. Students are informed not to move in the corridors and disturb other classes. If they do not have classes they are advised to be either in the Library or in the Gymkhana Hall.
2. The students are informed to maintain perfect discipline not only in the college campus but even outside the campus.
3. The students are advised to be in constant touch with the student welfare officer and other members of the staff for any of their difficulties.
4. The students are requested to co-operate with the college authorities in maintaining the campus clean and to keep up the high standards of the college.
5. The students are requested to participate actively in all activities of the college.
6. The students must obtain prior permission of the principal before publishing and supplying information to the press or any other agency in connection with the college and the K.L.E. Society. Failure to do so will result in disciplinary action against them.

STUDENT SUPPORT SERVICES

NCC and NSS: The College has the NCC and NSS for the boy and girl students. The training is given on every Sunday to the cadets/volunteers by the experienced and dedicated NCC/NSS Officers. Our students regularly represent the college in the RD Parade at New Delhi on 26th January every year. The NSS camps are organised during the midterm vacation. The students enrolled in NCC shall attend 80% of the parades conducted during the year. The NSS volunteers shall attend a minimum of 120 service hours during the year.

Employment Information, Career Guidance Counselling: A question which perplexes many a student's is "What Next"? To prove the redundancy of such a question an earnest attempt is made by providing employment guidance to the students of the college. Sourcing placements is an added feature. The objective is to lead student on the path of success with renewed vigour and confidence.

Students welfare fund: The College takes every step to make the students stay in the campus both joyful and memorable one. In that direction apart from providing every provision and facility, we care for the student grievances. The student grievance redressal cell is created specifically for this purpose. The students are free to approach this cell during the working hours to express their grievances, if any. We care not only for academic achievements but also take care of the overall well being of the students. To help the students accomplish multisided development, counselling and yoga is offered to the students.

Extension Activities: The students of our college can also exhibit their talents through the extension activities centre of the college. The centre plans and executes the activities throughout the year. Community development social work, medical campus, health and hygiene awareness, adult education and literacy, AIDS awareness and environment awareness are some of the activities undertaken, that benefit the community at large and orient the students and staff towards community welfare.

College Miscellany: College Miscellany is published every year and distributed to the students. Selected articles of the students and teachers are published in the miscellany. The miscellany is intended to encourage the student's flair for writing, humorous, serious and creative articles, essays and poems. The best write-ups in all sections are awarded prizes.

Events: The academic activities supported by youth festivals, picnics, study tours, Guest lectures, interactions, flower show, handicrafts exhibition and many more activities throughout the year make the campus bustle with activities and make the learning process joyful.

Incentives: The talented students who bring laurels to the college at the Inter University, State and National level Sports, Cultural and academic fields are honoured by the management on the K.L.E.SOCIETY'S Foundation day on 13th November every year. The college also honours them on the valedictory day.

Alumni (past students) Association: The college with a long history of 50 years has innumerable alumni holding top positions in every walk of life. The college wishes to enrich the Alma mater through the rich experience and valuable suggestions of the alumni. Alumni are invited to participate in all the activities of the college. We meet with our Alumni twice a year. The alumni may contact Principal/Chairman or Alumni association for membership.

Parents Meet: The College in its attempt to make learning a participatory process arranges parents meet twice a year. This enhances the participation of the parents in the education of their wards. Parents are important stakeholders and their valuable and constructive suggestions towards the improvement of the college are welcome.

Physically Unabled (Divyangans): We provide wheel chairs, Ramps, substitute writers, brail letters sheet and Individual care.

Scholarships: The following scholarships and concessions are available to the students.

1. Govt. of India Post Metric Scholarship.
2. State post Metric Scholarship.
3. Govt. of India Physically Handicapped Scholarship.

RULES FOR DISCIPLINE :

- All students shall observe the dress code framed by the college.
- The college campus is pollution free. Smoking, chewing pan, eating gutkha, use of addictive substances are prohibited.
- Wearing identity card is mandatory. The same needs to be produced whenever demanded by the college authorities.
- Loitering in the college campus without any reason is prohibited.
- Outsiders are not allowed to enter the college campus. Our students encouraging such students are viewed seriously.
- Driving vehicles in the college campus is strictly prohibited.
- Disfiguring of compound walls, classrooms, black boards, plants in the garden, furniture and the infrastructure is liable for penalty/punishment.
- Disciplined behaviour with classmates, college mates, teachers, office staff, and library staff is highly appreciated.
- Students who remain absent without valid reasons from the regular classes, tests, examinations, etc are liable for serious action, including expulsion.

WARNING

**RAGGING IS A PUNISHABLE OFFENCE
JOIN HANDS TO MAKE YOUR CAMPUS RAGGING FREE**

WHAT IS RAGGING ?

- MENTAL/ PHYSICAL/SEXUAL ABUSE.
- VERBAL ABUSE.
- INDECENT BEHAVIOR.
- CRIMINAL BEHAVIOR.
- INTIMIDATION/WRONGFULL RESTRAINT.
- UNDERMINING HUMAN DIGNITY.
- FINANCIAL TORTURE EXPLOITATION/ EXTORTION USE OF FORCE.



A STUDENT INDULGED IN RAGGING CAN BE

- EXPELLED FROM THE INSTITUTION.
- BANNED FROM THE HOSTEL.
- DEBARRED FROM EXAMINATION.
- DENIED ADMISSION TO ANY INSTITUTION.
- PROSECUTED FOR CRIMINAL ACTIONS.
- HIS / HER SCHOLARSHIP CAN BE WITHHELD.

INSTITUTION HAS BEEN ASKED TO FILE THE FIR WITH LOCAL POLICE AGAINST THOSE WHO RAG/ABET RAGGING AS PER THE DIRECTION OF SUPREME COURT AND U G C, "RAGGING IS STRICTLY PROHIBITED"

INNOVATIVE PRACTICES :



Social Inclusion in Education

01

02

Engaging Students in Quality Enhancement Processes



Learning beyond the Classroom

03

04

Certificate Courses for Skill Development



Study tours/Field visits for practical exposure

05

06

Lending hands to neighbourhood community to improve the Standards of Living

07

Collaborations for Industry academia





College Entrance



Ladies Hostel



Language Lab



Computer Lab



Multy Gym



Play Ground



Zoology Lab



Chemistry Lab



Swimming Pool



Canteen



Physics Lab



Botony Lab



Post Office



Commerce Building



Business Lab



Geography Lab



NCC



NSS



Youth Red Cross



Yoga Performance



Scouts & Guides



University Blues



Running Event



Handball Event



Cultural Programmes